

PGM.V – WIRELESS PORTABLE GOB MONITOR

MEASURES LENGTH AND VELOCITY OF GOBS BETWEEN SHEAR POINT AND BLANK LOAD

An invaluable aid to the machine operator to optimise production and assist in problem solving

Why monitor gob length?

Gob length varies and may cause defects – monitoring length helps you keep control

- Major changes in length are due to:
 - Mis-alignment of delivery system components
 - Wear on delivery equipment coating
 - Incorrect delivery equipment size for gob shape at shear
- Poor gob shape at load can cause faults including:
 - Poor glass distribution
 - Folds in glass
- Shape particularly important on NNPB
- Many changes occur gradually over a period of time – particularly an issue for long running jobs

Did you know?

- All gobs lengthen between shear and blank
 - They stretch when travelling through the scoop/ distributor & deflector, but stay fairly constant in the trough, or may even shorten
- Gobs are up to 40% longer at blank than they were at shear
- Gobs are usually longer than the blank they are loading into

PGM.V - Simple to operate:

- Three “soft keys”, plus selection buttons and large LCD screen allows set up while on the shop floor
- Small, lightweight and adjustable hand held wand with sensor
- Button on the wand allows single handed measurements
- Wand design allows use on multiple cavity configurations including triple and quad gob
- Rotation of sensor head allows positioning for different machine configurations
- Length of wand keeps operator away from machine
- Wireless link to PC for data transfer or set up
- Adjustment to measure different delivery equipment with variable guide plates
- Metric (SI) or Imperial units



For further product information and our current pricing scheme:
GLASS TECHNOLOGY SERVICES LTD.
 9 Churchill Way, Chapeltown, Sheffield, S35 5PY, UK
 Tel: +44 (0)114 2901801 Fax: +44 (0)114 2901851
 E-mail: info@glass-ts.com Web: <http://www.glass-ts.com>

PGM.V - Operation modes on hand held console

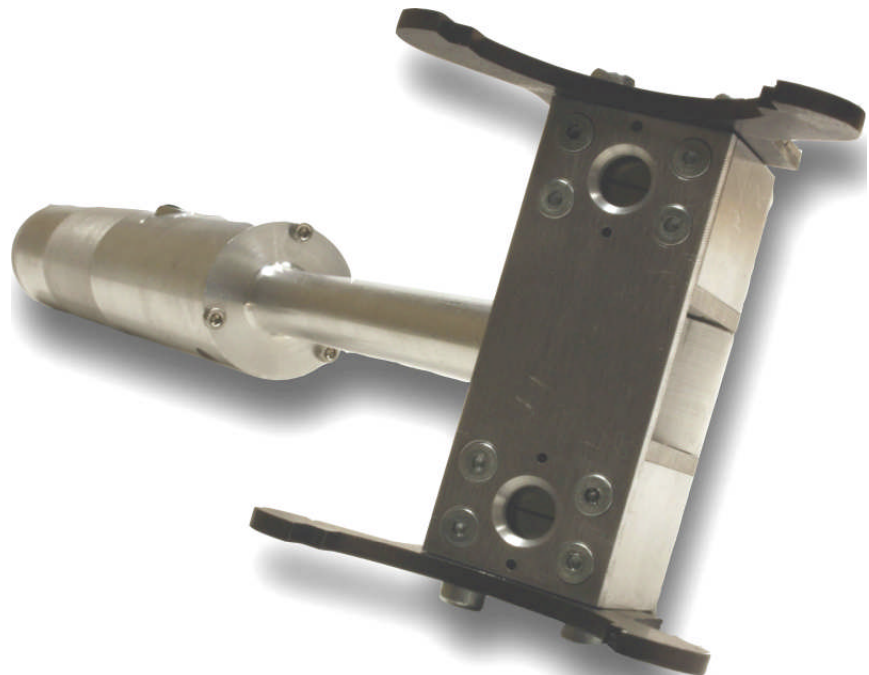
- **Configuration** – Set-up machine name, section number and cavity number for data storage, along with production ID and target weight – 32 machines, sections and cavities available
- **Store Mode** – store gob length, velocity measurements and calculated diameter with time and date stamp in memory – over 100,000 measurements in total
- **Data Review** – review stored data - scroll back through history and see average readings for each cavity along side individual records
- **Data Transfer** – wirelessly transferred to PC and viewed in MSEXcel
- **GobLI Mode** – for quick measurements with no setup. Displays gob length, speed and approximate diameter based upon user entered gob weight. Average function shows average readings for speed length and diameter collected at point of measurement (user reset). Readings are not committed to memory

Multiple language options: English, French, German, Spanish and Italian

- Wand runs on standard D cell batteries
- Console runs on 4 x AA batteries
- Single use or rechargeable batteries can be used

The standard PGM.V package includes:

- PGM.V base unit with protective leather pouch
- Wireless hand-held sensor
- Four sets of delivery locating lugs
- Communications software and wireless USB dongle for PC download
- Carry case



For further product information and our current pricing scheme:
GLASS TECHNOLOGY SERVICES LTD.
9 Churchill Way, Chapeltown, Sheffield, S35 SPY, UK
Tel: +44 (0)114 2901801
Fax: +44 (0)114 2901851
E-mail: info@glass-ts.com
Web: <http://www.glass-ts.com>